

# Puslinch Pioneer

Honouring The Past. Embracing The Future.

Produced by volunteers since 1975

Vol. 45, Issue 9 - May 2021

## Thank you to our volunteers

By Anne Day

For 45 years, volunteers in Puslinch have proudly donated their time and expertise to publishing the *Puslinch Pioneer*, which has become the well-respected source of information to residents of Puslinch.

When the paper first started back in 1975, there were no fancy software programs, and the paper was typed, cut and pasted onto sheets of paper and then sent to the printers.

A team of volunteers would collate the paper and then fold it so it could be sent out through the post office to over 3,500 households in the Puslinch community.

Back then if you attended collating day, you'd find a bustle of activity. It was quite the production. Everyone had their role and their pages. The tables were raised, so they could sit and fold the paper once it was collated.

Today, that paper is now 28- 32 pages, printed in colour, glossy paper, stapled and published 10 months of the year. Often an advertising flyer would be inserted for a local business.

Since COVID however, we have had the paper collated and folded at the printers, as we didn't want to put our collating volunteers at risk.

But we still rely heavily on volunteers – to submit articles, edit and do the layout, distribute the paper and recruit advertisers.

Without the advertisers, there would be no paper. Residents tell us that they read the paper from cover to cover, and keep them so if they need a service, they can find the local supplier easily.

We also draw on the expertise of local residents who write regular columns for us - our thanks to Marjorie Clark, Kim Hussey, Barbara Paterson, Marion Robertson, Mary Tivy and members of Master Gardeners in Guelph as well as the monthly submissions from the Library, Fire Department and Council Clips.

Our focus is on local news – both Puslinch and surrounding areas. We love to highlight the accomplishments of one of our residents and promote local events and fundraisers as much as we can.



Photo from Unsplash

And we have a community section at the back that lists church services and community announcements.

The board of the *Pioneer* meets monthly to oversee the running of the organization – and our thanks to Barbara Bulmer, Barbara Chillingsworth, Dianne Churcher, Karen Harding, Stella O'Krafka, and Genny Ribalko for their tireless efforts in making sure the paper comes out each month.

Our thanks also to Megan Barnes for setting up and maintaining our website – [www.puslinchpioneer.ca](http://www.puslinchpioneer.ca) and to Ampersand for printing the paper and going the extra mile during the pandemic to make sure the paper gets out.

And we are always looking for volunteers – to submit articles, be a roving reporter, to help with digital marketing and advertising sales.

To find out more, please email [editor@puslinchpioneer.ca](mailto:editor@puslinchpioneer.ca) or phone 519 767 9383.

Thank you to all our volunteers, past and present, we couldn't have done it without you.

*This article first appeared in the Guelph Tribune as part of Volunteer Week Celebrations in April.*

# Editorial

The outdoors is calling.

In this issue of the *Pioneer*, we seem to be focusing on what you can do outdoors – like camping, protecting wildlife as you go out and about and the opportunity to purchase a rain barrel and support local charities at the same time.

While we are in the midst of another lockdown, we thought we would highlight different local restaurants where you can order and purchase take-away meals.

Once more we focus on the challenges brought on by gypsy moths and what you can do to get rid of them and in *Naturally Speaking*, Marion Robertson shares the secret powers of the Haskaps.

And we bring you the latest on where you can pre-register of your vaccination.

We actually sent out this information early in April as part of our Pulse notifications. If you want to get early news, sign up and we will add you to our list for notices. Just go to [www.puslinchpioneer.ca](http://www.puslinchpioneer.ca)

April 20 is National Volunteer Day and the *Pioneer* participated in a special supplement that appeared in the Guelph Tribune and on the PIN Network website.

We share the article with you as we want to acknowledge all the volunteer who make the *Puslinch Pioneer* happen.

Anne Day

## INSIDE THIS ISSUE

### COMMUNITY



- Pre-register for vaccine.....Page 3
- Protecting wildlife.....Page 9
- Mother’s Day event.....Page 13

### NATURE



- Rain Barrels.....Page 17
- Naturally Speaking.....Page 21
- Ask the Expert.....Page 25

### FOOD



- Take away options.....Page 7
- Cook’s Corner.....Page 23

## Our Mission

The *Puslinch Pioneer* is a monthly publication produced by local volunteers to provide an authentic source of local information about the social and political activity within the community, and to encourage participation in community events.

Volume 45: Issue 9 May 2021  
Published by volunteers for the community since 1975.

Ten issues are published a year and distributed free of charge throughout Puslinch. [www.puslinchpioneer.com](http://www.puslinchpioneer.com)

Interim Chair  
Barbara Bulmer 519 658-2243  
[chair@puslinchpioneer.ca](mailto:chair@puslinchpioneer.ca)

Editor  
Anne Day 519 767 9383  
[editor@puslinchpioneer.ca](mailto:editor@puslinchpioneer.ca)

Advertising & Sales  
Dianne Churcher 519 763 6564  
[advertising@puslinchpioneer.ca](mailto:advertising@puslinchpioneer.ca)

Church/Community Notices & Circulation  
Stella O’Krafka 519 658 4767  
[churchcomm@puslinchpioneer.ca](mailto:churchcomm@puslinchpioneer.ca)

Board members  
Barbara Chillingsworth, Karen Harding, Genny Ribalko.

The *Puslinch Pioneer* does not necessarily endorse the opinions expressed in articles or Letters to the Editor. We reserve the right to refuse items submitted and to edit all material. All advertising is accepted in good faith.

**SUBMITTING ARTICLES** Items of interest to Puslinch residents are welcome. Letters to the Editor must include a telephone number.

We ask that articles be submitted by email and adhere to the Writers Guidelines which can be downloaded from [www.puslinchpioneer.ca](http://www.puslinchpioneer.ca)

Unless otherwise stated, the deadline for submission is the 2nd Friday of the month. Next deadline is **Friday, May 14, 2021.**

Because of the increased interest we cannot guarantee inclusion, especially those received after deadline.

Annual subscription rate \$50. Forward request and payment to 29 Brock Road South, Puslinch, ON N0B 2J0

Printed by Ampersand Printing  
© Puslinch Pioneer

# Council Clips

## Highways 6 & 401 Improvements:

Staff has recommended to Council that the MTO deliver a presentation to Puslinch Council before the next Public Information Centre to follow up on the outstanding concerns.

## Concerns in Arkell:

Staff is instructed to review the concerns in Arkell; Guelph Junction Railway, speed limits and Guelph Police firing range; and to liaise with the appropriate staff at the City of Guelph, and any other authorities that are appropriate, to identify potential solutions.

## Hamilton Conservation Authority:

In its report it is noted that current water levels in major watercourses are well below the long-term averages which is unusual for this time of year.

Lake Ontario water levels are 9 cm below average and 74 cm below the highest level ever recorded for this time of year. High visitation to conservation areas continues.

## Growing the Greenbelt Study Area:

Mike Marcolongo made a presentation to Council outlining his support of the proposed expansion of the Greenbelt to include the Paris Galt Moraine. He feels this would prevent further expansion by neighbouring urban municipalities and will retain Puslinch's rurality, sense of place and identity.

## Growing the Greenbelt Study Area:

County Planning has been, and continues to be, consistent in its position that there is no rationale for expanding the Greenbelt. There are adequate Provincial legislation, regulations, plans and policies; and local plans, policies and measures in place.

## Proposed Puslinch Heritage Registry:

The Heritage Committee is requesting Council's directive to initiate consultation with property owners as "listed" on the register. The purpose of including a property is to provide interim protection from demolition to give the municipality time to assess whether to begin the designation process after a demolition application has been received.

## Natural Gas Service Extensions:

The Province was requested to allow

the use of a financial tool called a Temporary Capital Surcharge (TCS) to help fund the extension of natural gas services to rural communities.

Recently the Province and the Ontario Energy Board approved the use of TCS's for natural gas as well as the rate.

Two projects within the Puslinch Lake area are waiting for a decision.

## Transportation Master Plan Project:

This project has been approved for completion in 2021 at a total budget of \$100,000 which includes a traffic count study and determination of the applicable Road Condition Index for Township Roads.

The Township applied for funding from the Federation of Canadian Municipalities in the amount of \$50,000, unfortunately confirmation has not yet been received.

## Parking By-law:

The Township continues to receive complaints regarding the illegal parking of vehicles near Aberfoyle Public School on Old Brock Road.

Staff is proposing an amendment by the addition of a no parking area on the South Side of Old Brock Road during the school morning drop off and afternoon pick up times of the year.

## Cox Construction Synder Woodlot:

Approximately five hectares known as the Synder woodlot was placed in a holding provision in order to delay extraction for a period of approx. 15 years until such time that a replacement Woodlot is established.

The specific requirements of the holding removal have now satisfactorily been met and now recommend the holding provision be removed.

## You can pre-register for the vaccine

As the region pushes toward the goal of vaccinating at least 75 percent of residents by June 2021, partners are working to reduce barriers to vaccination and provide the resources and supports residents need to get vaccinated.

Public Health has announced pre-registration for Phase 3 vaccinations. That means all residents (age 16+) of the region are eligible to pre-register for their vaccination.

As residents eligible under Phase 3 pre-register, it is important to remember that local vaccinations still follow the Province's vaccination framework.

That means many residents who are Phase 3 eligible will likely not be vaccinated until June. However, pre-registering is still the best way for residents to ensure they receive a vaccine as soon as it is their turn.

For more information on pre-registering for the COVID-19 vaccine, please visit [wdgpublichealth.ca/register](http://wdgpublichealth.ca/register).



**TOWNSHIP OF PUSLINCH**  
**(519) 763-1226**

### **Council Meetings (519) 763-1226**

May 5 and May 26, 2021, 10 a.m. council meeting, and public information meeting May 26 at 7 p.m.

Please check the Council Calendar at [www.puslinch.ca](http://www.puslinch.ca) as meetings may be subject to change.

### **Library Hours (519) 763-8026**

For current hours and services, please call Puslinch Branch at 519.763.8026 or visit us online at [www.wellington.ca/Library](http://www.wellington.ca/Library).

### **Optimist Recreation Centre Hours**

Monday – Friday 9 am - 10 pm  
Saturday 9 am - 10 pm  
Sunday 9 am - 10 pm

Contact: 519-763-1226 or [rentals@puslinch.ca](mailto:rentals@puslinch.ca)

### **Historical Society Archives**

Saturdays 12 noon - 3 pm  
or for appointment email [ardyne.farm@sympatico.ca](mailto:ardyne.farm@sympatico.ca) or 519-822-8559

### **Waste Facility (519) 837-2601**

Open Wednesdays, Fridays and Saturdays 8 am - 4 pm. Located at 6922 Concession #4 between County Rd.#35 and Hanlon (Hwy #6)

## Camping this summer?



Due to COVID, GRCA conservation areas will be operating at 50 percent capacity and only 50 percent of campsites will be available for reservation this season.

Given the pandemic, there was a deluge of people trying to book their spots when registration opened on April 6.

When it comes to booking a campsite, you can reserve a spot for up to a month forward and have a maximum of six people onsite.

While the demand for the long weekends was high, there are still spots available.

Camping is offered from May 1 to October 15.

The parks are scattered across the Grand River watershed - an area larger than Prince Edward Island - and offer a huge variety of camping experiences.

Whatever you are looking for, you will find it in Grand River Parks: an af-

ternoon at the beach, a hike through green forests, canoeing on a pond or dropping a line to catch a trophy-sized fish.

The parks are just a short drive away from home, whether you live in Toronto, Hamilton, Kitchener, Guelph, Brantford or London or surrounding areas.

Reservations can be made in advance through our **online reservation system** only, beginning **April 6, 2021 at 9 a.m.**

The online reservation system is accessible 24 hours a day from April 6 until mid-October, when the camping season ends.

Reservations by phone can be made by calling the parks directly beginning May 1, 2021.

## Optimist Club Scholarships

By Don Mackay

The Optimist Club of Puslinch is once again offering scholarships to assist youth and families of the Township of Puslinch with educational expenses and to promote the Club as an organization committed to the advancement of education.

This year three scholarships of \$1,000 each will be awarded to qualified applicants commencing in September 2021 for the 2021-2022 school year.

This is the 20th year that the Club has offered the scholarship program. The three scholarships will be split into three streams.

One scholarship will be awarded to

- those students who are pursuing a university degree,
- one scholarship will be awarded to those students who are pursuing a community college degree, and
- one scholarship will be awarded to those students who are pursuing a vocational-technical apprenticeship/diploma.

To be eligible to apply for any of the scholarships the applicant must be;

- a resident of the Township of Puslinch;
- 21 years of age or younger in the year the award is given;
- entering their first year of post secondary education; and enrolled in either a university or a community college or a vocational-technical school or undertaking an apprenticeship.

The due date for this year's submission is **June 25, 2021.**

For further information and application forms please go to our website; ***www.optimistclubofpuslinch.com*** and go to programs/scholarship; contact your **high school guidance department;** or **Don McKay (519) 822-2984, *donmckay@golden.net***



## HAY NEIGHBOUR!

Modern Real Estate  
Marketing and Sales:  
**LOCAL PROFESSIONAL**  
Call today for an update  
on your Market Value!

**ALLISON BUREAU**  
BROKER

abureau@trilliumwest.com

📞 226.314.1600

📞 519.546.7083

**trilliumwest.com**

🐦 @reality\_bureau

f /RealEstateBureau

Not intended to induce any party to breach buyer or seller agency agreements.



## New signs

By Peter vanOordt

Puslinch Township will be replacing and upgrading the majority of its green and white municipal address signs.

During an emergency, these signs are instrumental in helping first responders quickly and efficiently locate the emergency scene.

The new signs will include the official municipal street name along with the number and will be installed in the rural areas of the Township.

Including the street name is expected to help members of the public provide more accurate location information when reporting an emergency to 9-1-1.

The current style of signs (without the street name) will remain in the more built-up areas of the Township. The Township expects to begin this work in May and have it completed over the summer.

If fire, police, or EMS need to respond

to an emergency at your house or on your property, it's important that we're able to find you quickly and efficiently.

One of the ways you can help is by ensuring that your municipal address sign is clearly visible from the road. If you're able, and it's safe to do so, you may also want to have someone meet us at the road to help direct us to where we're needed.

This is especially helpful for larger properties where the emergency is somewhere other than the main residence.

Irrespective of whether you're in a rural area and are getting a new sign, or in a village and are keeping your current sign, now is a good time to inspect your municipal sign and signpost, making sure that it is clearly visible from the road from both directions.

Please prune or remove any overgrowth that may be obstructing your sign or could obstruct it in certain weather. If your signpost is not in good repair, please contact the Township at (519) 763-1226 or [services@puslinch.ca](mailto:services@puslinch.ca) to arrange for it to be repaired or replaced.

## FarmLINK

Do you have farm land to rent? Are you interested in farming?

FarmLINK.net is an initiative of Farm-Start. It is a farm-matching site that creates opportunities for new farmers in Wellington County and beyond.

The site links to farms for sale or rent in the area and resources or mentorship for starting a farm, and its free! With 800+ users across Canada, they are increasing the number and diversity of opportunities on the site every day.

### How does it work?

- Free user profiles, add photos and descriptions.
- Use MyMatch to see top-rated potential matches.
- Search resources and regional support.
- Private and secure messaging on the site.

### Why Wellington?

Wellington County has the highest number of diversified farms in the Province. It is an agricultural hub of activity with access to business resources, networks and innovation.

Check out their website – with lots of resources to help you. <https://farm-link.net>

CREMATION  
\$1935<sup>+HST</sup>  
If prepaid by  
June 30, 2021

All Inclusive  
No Extra Fees  
or Hidden Charges

## WALL-CUSTANCE FUNERAL HOME & CHAPEL

Locally owned and operated by Scott & Betty Ann Young  
206 Norfolk Street, Guelph, ON N1H 4K3  
519-822-0051 [www.wallcustance.com](http://www.wallcustance.com)

### Includes:

- Transfer of deceased from place of death or crematorium
- Coroner and Death Registration fees
- Cremation fee
- Cremation casket & container to hold cremated remains
- Procurement of all legal documentation
- Unlimited copies of death certificates
- Notification of CPP/OAS; Filing of CPP Death Benefit and Survivor's Benefit forms
- Memorial Tree at the Wall-Custance Memorial Forest - 400 acre Arboretum at the University of Guelph



Betty Ann Young



# The less your food travels, the further it goes.

On average, food travels 2,500 km before it reaches our plates. Food from the farmers' market, travels less than 250 km. Less pollution means fresher food.



We are actively preparing  
for the 2021 season!

Check our website & social media  
for regular updates on our ability to open.  
[www.afma.ca](http://www.afma.ca)

**Food you love... Farmers you know!**

# A get-away with a take away?

By Anne Day

Tired of cooking? I suspect many of us are as we face another lockdown.

Many of our local restaurants are offering take-away and as a way to support them, we encourage you to place your order and take a break from the kitchen.

**Aberfoyle Mill** – 80 Brock Road S, Aberfoyle – 1-888-858 4684  
Place orders for pick up on Friday, Saturday and Sunday 4-7.30 pm.  
[www.aberfoylemill.com](http://www.aberfoylemill.com)

**Borealis Grille & Bar**, 1388 Gordon Street, Guelph, 519 265 9007  
With daily features, take away available Monday-Sunday, 3-8pm  
[www.borealisgrille.ca](http://www.borealisgrille.ca)

**Cascata Bistro**, 281 Carlisle Road, Carlisle, 289 895 7986  
Pick up Wednesday-Friday 3-8pm



Friday –Sunday 12-8pm  
[www.cascatabistro.ca](http://www.cascatabistro.ca)

**Change of Pace**, 42 Queen Street, Morriston 519 767 9987  
Pick up Monday-Friday 8am -6pm  
[www.achangeofpacerestaurant.com](http://www.achangeofpacerestaurant.com)

**Crieff Hills Retreat Centre**, 7098 Concession 1, Puslinch 519 824 7890  
Order soups, honey and eggs. Special occasion meals. Pick up daily until 3.30pm  
[www.crieffhills.com](http://www.crieffhills.com)

**Envers Grocery Store**, 42 Queen Street, Morriston 226 780 5683  
Tuesday to Saturday – 3:00 to 8:00, Sunday 11:00 to 6:00  
<https://facebook.com/enverscountrystore>

**Great Wall Restaurant**, 46 Queen Street, Morriston 519 763 0002  
Monday, Wednesday, Thursday 11-9pm, Friday 11-10, Saturday 12-10 and Sunday 12-9  
<https://sites.google.com/view/greatwallrestaurantofmorriston>

**Old Marina**, 1947 McClintock Drive, Cambridge 519 658 0367  
Can order produce baskets and online food delivery through Door Dash.  
[www.oldmarina.com](http://www.oldmarina.com)

**The Village**, 30 Brock Road S 519 265 5455 special features offered each day. Pick up is 8-6pm.  
[www.facebook.com/thevillagefamilyrestaurant](http://www.facebook.com/thevillagefamilyrestaurant)

**Union Market Square**, 599 Arkell Road, Arkell 519 767 0024  
Tuesday- Friday 10-6pm – full menu  
Saturday 10-3, limited menu  
[www.unionmarketsquare.com](http://www.unionmarketsquare.com)

Let's support our local restaurants.  
Bon appétit.

**WHITCOMBE BROS.  
DRIVING RANGE**

**LAWN & GARDEN  
EQUIPMENT SERVICES**

6994 GORE RD.  
PUSLINCH, ON. NOB 2JO  
**519-621-9239**

**Sunrise Mystery Car Rally  
RESCHEDULED**

**NEW DATE: Sunday, June 13, 2021**  
due to current provincial COVID restrictions.

Thank you!

Contact: [fiona@sunrise-therapeutic.ca](mailto:fiona@sunrise-therapeutic.ca)

**Ice Cream  
by the scoop  
or by the tub!**

#PUSLINCHPROUD

**UNION  
MARKET SQUARE**  
599 Arkell Rd . 519-767-0024  
[www.unionmarketsquare.com](http://www.unionmarketsquare.com)

**OTT'S AUTO**

Trust Your Auto Repairs To The Very Best!



OttsAuto.ca  
519-658-9331

“Serving Cambridge & Area Since 1905”

166 Queen Street West,  
Cambridge (Hespeler) ON,  
N3C 1G4

*Excellence, Professionalism Because We Care*



**DUMFRIES FARNWORTH**  
SUPERIOR MEMORIALS

519-650-0190

519-763-4567

670 Fountain St. N.  
Cambridge

755 Woolwich St.  
Guelph

Across from Cambridge Youth Soccer

Across from Woodlawn Cemetery

Bring in this AD to receive 10% off your memorial

[www.superiormemorials.com](http://www.superiormemorials.com)

*Come Play the Parks!*

*Proud to be your Neighbourhood Golf Courses in Puslinch Township*

*Twice-weekly Chef-made Dinners at Victoria Park East  
Curbside Pick-up!*

*Join our Email Group to get Advance Notice - Visit our  
Website for Details.*

It's not too early to book your Tournament  
or Group Golf Day, Covid-Safe!!  
Ask us how.



519-821-2211  
1096 Victoria Rd. S.

[WWW.VICTORIAPARKGOLF.COM](http://WWW.VICTORIAPARKGOLF.COM)



519-821-1441  
7660 Maltby Rd. E.





## Protecting wildlife

By Mandy Karch


As summer approaches, wildlife will move from over-wintering habitats to spring-summer habitats. Please watch for wildlife, and help them cross safely.

Respect for nature and wildlife is beneficial, and mitigating the threats of roads to biodiversity contributes to a healthy, resilient environment that supports a thriving community.

In 2019, OREG launched a Citizen Science project in Wellington County. Citizen Science is volunteer-based ecological monitoring that plays a key role in successful conservation programs.

The dedicated team of Citizen Scientists and NRSI staff documented nearly 1000 observations between May and October. Over 100 of the dead animals found on the road were turtles.

Turtles are species at risk, and roads and traffic pose a significant threat. When year after year adult turtles are killed by cars as they attempt to move through the landscape to feed, nest, or over-winter, it is inevitable that the population will be decimated.




**Give Wellington Wildlife a Brake**

Many of the County of Wellington's roads run by natural areas and as a result drivers may encounter animals.

Please slow down and be aware of animal crossings this season – you could save a life!

Learn more about avoiding wildlife on the roads at [www.wellington.ca/countywildlife](http://www.wellington.ca/countywildlife)




June is a particularly vulnerable time for turtles as females move across the landscape to nest. Turtles are important for overall ecosystem health as they recycle nutrients and help keep waterbodies clean by feeding on decaying matter.

Facilitating native plant seed dispersal and forming part of the food web are other important services these reptiles fulfill in the environment.

The public is a key partner in determining how roads affect biodiversity. Motorist behaviour, such as driving speed and attentiveness, tremendously influences whether or not a wildlife/vehicle collision will occur.

Understanding why it is important to prevent these collisions for smaller wildlife such as turtles that do not necessarily pose a human hazard, such as a collision with a deer, empowers motorists to choose driving behaviours that help avoid strikes with slow moving animals.

### You can help

- Watch for wildlife
- Obey speed limits and remain attentive – especially on road segments bisecting wetland/woodlot habitat
- Move turtles in the direction they are moving, when safe for you and other motorists
- Help injured turtles – Ontario Turtle Conservation Centre, 705 -741 5000 or <https://ontarioturtle.ca>
- Report wildlife/road sightings <https://inaturalist.ca/projects/wildlife-on-roads-in-ontario>
- Stay informed about road projects and support the implementation of wildlife mitigation measures.

 **brock road nursery**  
Garden Centre & Gift Shoppe

EST. 1991  
  
519.836.5010



Thank you for your continued support.  
Please visit our website for updated shopping hours + information.

[www.brockroadnursery.com](http://www.brockroadnursery.com)  
[info@brockroadnursery.com](mailto:info@brockroadnursery.com)

# We Make Meals Easy

It isn't always easy to make sure you're eating properly, especially if you live alone or have a busy lifestyle.

## Delicious Direct

with its fully prepared, fresh not frozen, meals is ideal for seniors, students, singles and busy professionals who want to eat healthy without the fuss of shopping, cooking or cleaning up.

### No Subscriptions or Commitments

Visit our website for meal options and details.



[www.deliciousdirect.ca](http://www.deliciousdirect.ca)

728 York Rd. Guelph  
(519) 823-6700



## PUSLINCH Leaf and Yard Waste Collection

- Leaf and yard waste will be collected curbside in **urban** areas only.
- Place materials curbside by 7:00 am on the date listed here. **Collection may take place any time during the week.**
- Set out materials in brown paper yard waste bags and/or reusable cans clearly marked "Yard Waste."
- Small sticks can be bundled.
- Loose materials, or any in plastic bags, **WILL NOT** be collected.

The next leaf and yard waste collection date for Puslinch is:

**WEEK B**

Tuesday, May 25



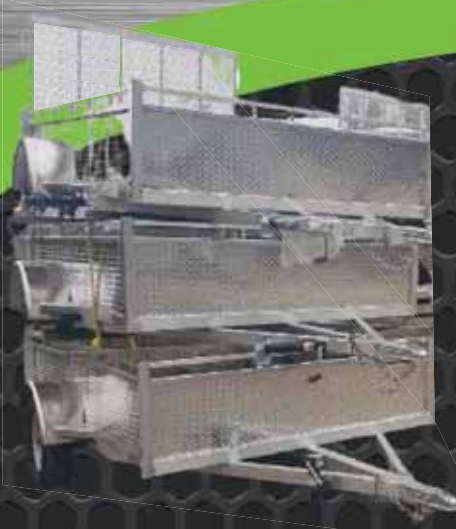
519.837.2601 | [wasteinfo@wellington.ca](mailto:wasteinfo@wellington.ca)  
[www.wellington.ca/yardwaste](http://www.wellington.ca/yardwaste)

Official Mark of The Corporation of the County of Wellington

Alternate formats available upon request.



# SPRING CLEANUP? YOU NEED A TRAILER!



## ALUMINUM UTILITY TRAILERS

5'x8' Single Axle	\$2850	7'x14' Single Side load	\$4590
5'x10' Single Axle	\$2950	7'x14' Tandem Axle	\$4550
6'x10' Single Axle	\$3150	7'x16' Tandem Axle	\$4990
6'x12' Single Axle	\$3250	7'x16' Tandem Side load	\$5650
6'x14' Single Axle	\$3350	7'x18' Tandem Axle	\$5390

Options: Bi-Fold Gate +\$125 Aluminum Rims +\$100 Aluminum Tool Box +\$325 Wheeled Jack +\$45

**519-658-0444**

[info@speedwaytrailers.com](mailto:info@speedwaytrailers.com)

6792 Wellington Rd 34, Puslinch

# In Memoriam

## Robert Thompson Sherwood



If you were lucky enough to know Robert, you knew him as "Bob". Bob passed away Saturday afternoon, April 17, 2021 at Cambridge Memorial Hospital. He waited until he had his visit with his three K's, Kristi-Anne, Kathrine, and Kate.

Beloved partner of forty years, Kate Dudnick. Cherished Dad of Kristi-Anne (Rick) Sherwood, Kathrine (Trevor) MacCormack and beloved Grandpa of Mitchell and Evan. He will be missed by so many.

Bob was one time President and loyal charter member of the Royal City Lions Club (Guelph). He also volunteered tirelessly for the Farnham Cemetery and the Arkell United Church. He was a member of the Royal Canadian Legion, branch 234. Also enjoyed kinship and membership at the Red Chevron Club No. 4.

Bob loved to spend his winters soaking up the sun in Naples, Florida. His

hobbies were his work and his work were his hobbies. He could teach MacGyver a lesson, he could build, repair, or fix anything.

What we'll miss most is his sense of humour, his love of family and rock solid advice, "remember, keep it between the hydro poles."

Future plans for a Celebration of Life will be shared with all his loved ones and his 'Arkell gang' when we can gather safely.

Arrangements entrusted to the WALL-CUSTANCE FUNERAL HOME & CHAPEL 519-822-0051 / [www.wallcustance.com](http://www.wallcustance.com).

Memorial contributions to the Alzheimer's Society of Waterloo Wellington would be appreciated.

A tree will be planted in memory Robert T. Sherwood in the Wall-Custance Memorial Forest.

Refill prescriptions and see what else is new on our renovated website! [www.primicarepharmacy.ca](http://www.primicarepharmacy.ca)

Arbour Medical Centre  
281 Stone Rd E Guelph

**Prime Care Home Health**  
an exciting addition to  
**Prime Care Pharmacy**

Rollators, walkers and canes are great tools to help with getting around safely. We have been granted approval for the Assisted Devices Program (ADP) - call or drop in!

Home Health      Pharmacy  
519-837-2680      519-837-4594

Like us on Facebook

**BUYING • SELLING**  
~ FARMS ~  
~ HORSE FARMS ~  
~ RESIDENTIAL ~

**Sandy Dalton**

Sales Representative  
**ROYAL LEPAGE**  
Royal LePage Real Estate Services Ltd., Brokerage

Toll Free  
**1-888-645-4267**

Always Happy To Provide Client References



**Book your spring/summer project now!**

25 Years in Puslinch, 35 Years of Deck Building Experience  
Specializing in Cedar and Composite Decks

519-822-1369    justdecks.net    brad@justdecks.net



# DENTAL IMPLANTS

Stop living with missing teeth or poorly fitting dentures. Come visit us for a complimentary dental implant consultation & all your other family dentistry needs.

**10% DISCOUNT FOR SENIOR CITIZENS**



DR.  
*Mistry*  
DENTISTRY

103 CLAIR RD E  
GUELPH, ON  
N1L 0J7

519.822.7474  
WWW.DOCTORMISTRY.COM  
INFO@DOCTORMISTRY.COM

# Lights. Camera. Change.



Photo from Unsplash

The Zonta Club of Guelph is excited to announce this very special Mother's Day Weekend Virtual Event: LUNAFEST®2021 FILMS BY AND ABOUT WOMEN.

LUNAFEST® is an event that connects women, their stories, and their causes through film.

This season's program of seven selected short films (86 minutes total) will

compel discussion, make you laugh, tug at your heartstrings, and motivate you to make a difference in your community.

Incredibly diverse in style and content, LUNAFEST® is united by a common thread of exceptional storytelling – by and about women.

We can't gather this Mother's Day in person, so we invite you to join us virtually for some fun and entertainment. Invite the women in your life (and don't forget to include their significant others), grab your favourite beverage and snacks, then follow us on Facebook at <https://www.facebook.com/ZontaGuelph> for event updates plus FaceBook

Live movie reviews and commentaries happening on Sunday, May 9.

Your ticket will give you access to start streaming the event between 9:00 a.m. on Saturday, May 8 to 9 a.m. on Monday, May 10, 2021.

Once you start watching, you have 24 hours to view the films. You may skip ahead, go back or watch as many times as you like during that period, all from the comfort of your couch!

\*Films are appropriate for audiences age 16 and over\*

The ticket price for the event is \$15 Regular ticket and \$10 Income Accessible (e.g. student / fixed income) and can be purchased online at <https://www.lunafest.org/screenings/virtual-screening-zonta-club-of-guelph-canada-050821>

Proceeds from this Event will go to the Zonta Club of Guelph to help fund various local projects geared explicitly towards women and girls' empowerment.

A portion of the proceeds will go to Chicken and Egg Pictures, a foundation supporting women nonfiction filmmakers whose artful and innovative storytelling catalyzes social change.

**LUNA®** with the **Zonta Club of Guelph** are committed to inspiring women and advocating for change because equality can't wait for someday. **Someday Is Now®.**

**Contact us for more information:**  
[zonta@zontaguelph.ca](mailto:zonta@zontaguelph.ca)  
<http://www.zontaguelph.ca/>

**LUKE'S CARPENTRY SHOP**  
**519-821-4566**  
 127 Morris St. Guelph, Ontario  
**50+ years experience**  
 Cabinetry Refinishing and Fabrication  
 Cabinetry & Furniture Repairs

**ETP** ESTATE TRANNERS PLANNERS CANADA

Need **Executor Support?**  
 We can help.

[Contact us to learn more](#)

866-309-0387  
 info@etpcanada.ca  
 ETPCanada.ca

**MICHAEL'S MOBILE** TRUCK & TRAILER REPAIR INC.

**Michael J. Marinovic**

Office: 519-780-2710  
 Fax: 519-780-2892  
 Cell: 226-203-0895  
 E-mail: [m.mobile@bellnet.ca](mailto:m.mobile@bellnet.ca)

7424 Wellington Rd 34  
 Puslinch, ON NOB 2J0

**Repairs to light, medium & heavy duty vehicles**

- Pick-Up & Delivery of vehicles and/or all sizes of Trailers
- Motor Vehicle Inspection Station (Safety Inspections)
- Mobile & Emergency Road Service
- All Automotive Services
- Welding & Fabricating
- Float Service

DON'T GAMBLE - CALL CAMPBELL  
**CAMPBELL'S SANITATION**

SEPTIC TANK CLEANING  
& PORTABLE TOILET RENTALS

(519) 822-1521 or  
1-877-818-7295, Toll Free  
campbellspt@rogers.com  
www.campbellsportables.ca



ECRA/ESA Licence# 7003077

Electrical wiring and  
maintenance of new  
residential, additions and  
renovations, commercial,  
and solar projects

519-767-0768  
info@dallsonselectric.com

**PAUL'S  
Snobiz**

SNOWPLOWING, SALTING, SANDING, FENCE BUILDING  
WE GUARANTEE FAST EFFICIENT SERVICE

519-763-1098 Paul F. Hiltmudtel  
4458 VICTORIA ROAD SOUTH GUELPH N0B 2J0



Personal training in *your* home!

**FITNESS**  
*after* **50**

www.Fitnessafter50.ca tel: 519-827-7170



905-659-9000

1406 Gore Road  
RR #2  
Puslinch, ON N0B 2J0

Ted Van Dinther  
President

Office (905) 659-9000  
Fax (905) 659-9009  
Mobile (519) 240-1992  
ted@tvanex.ca  
www.tvanex.ca

**GREGCREST FURS**

TANNED WALL HANGER FURS  
FOR DEN OR REC.

DIANNE 519-822-2208  
PUSLINCH

519-212-2129

**CHAMBERLAIN**

Plumbing & Mechanical

Residential · Commercial · Industrial



**Southgate  
Animal Hospital**

519 822-9600

361 Southgate Drive  
Guelph, On N1G 3M5  
info@southgateanimalhospital.ca  
www.southgateanimalhospital.ca

Dr. Barb Deter  
Dr. Shanna Clinch  
Dr. Caitlin Forbes

Mon - Thurs: 8 am - 7 pm  
Fridays: 8 am - 6 pm  
Saturdays: 8 am - 12 pm

WATER PUMPING EQUIPMENT  
**D.M. Davidson**  
SALES AND SERVICE

RR#6, 4614 Sideroad 12 North  
Guelph, Ontario N1H 6J3

Ph. 519-822-3039  
Fax: 519-837-9811

**Don Davidson**  
M.O.E. #6013

**Arkell Ridge**  
SAND & GRAVEL

**TOP SOIL & MULCH**

OPEN TO THE PUBLIC - DELIVERY AVAILABLE  
661 Watson Rd. S, Puslinch 519-993-7192

# The Pasmore Sawmill Fire

By Marjorie Clark

The Edward Pasmore family emigrated from Wyrardisbury Parish, Buckinghamshire, England in 1842.

During 1857-1861 and possibly longer, they operated a large, steam-powered lumber mill on the 1st Concession in Puslinch, which burned down in early November 1857, a loss of \$40,000.

The following is a letter to the editor of the Guelph newspaper, describing the events of that day. For reasons unknown, the name of the letter writer is fictitious, as no-one by the name of Ivan resided in Puslinch at the time.

To the Editor of the *Guelph Advertiser*  
9th Nov. 1857

Sir:

You are again called upon to publish one of those great conflagrations that

ruin the section of country where they occur.

At 10 o'clock on Friday night last, a fire broke out in the steam sawmill owned by Messrs. Pasmore and Co., First Concession, Puslinch, when their mill, lumber and logs were consumed to the amount of \$40,000.

The news soon spread throughout the surrounding country and it was not long before a large concourse of people were assembled for the purpose of staying the progress of the devouring element but their efforts proved unavailing - the mill was largely consumed. They then turned their energies to the lumber, which was catching in different places.

In the meantime, a messenger was sent to the village of Elgin and Morrison for the Victory Fire Company. I may mention that owing to the excitement, this was neglected until three hours after the fire broke out.

Had the Company been summoned on the first alarm, there is every prob-

ability that the lumber would all have been saved. Immediately on receiving notice, the Fire Company, under the orders of Captain Clark, started off for the scene of destruction, but as the distance to be travelled is three miles, the immense yard of lumber was enveloped in flames, which a scarcity of water battled to subdue.

Fresh energies were then directed to the saving of McPherson's barn, in which they happily succeeded. Messrs. Pasmore and Co. have the sympathy of the public in their hour of adversity; I believe the place was not insured.

I have great pleasure in again recording the praiseworthy conduct of Messrs. McLean and Clark of the Puslinch Mills, in placing their means at the disposal of the Fire Company. Those gentlemen have endeared themselves to the public by their many acts of generosity, which will not soon be forgotten.

Ivan, Puslinch

**COLDWELL BANKER** | NEUMANN REAL ESTATE BROKERAGE

## q1 Market Update

### Puslinch 2021

January 1 - March 31

avg. sale price	new listings	units sold	avG. dom
\$1,641,618	34	17	21
▲ 80.9% INCREASE compared to same period in 2020	▼ 35.8% DECREASE compared to same period in 2020	NO CHANGE compared to same period in 2020	▼ 27 DAYS FASTER compared to same period in 2020

WHAT IS YOUR HOME WORTH TODAY? WHY NOT GIVE US A CALL AND FIND OUT...YOU MAY BE SURPRISED!

DOM = DAYS ON MARKET

519.821.3600 | [cbn.on.ca](http://cbn.on.ca)  
EACH OFFICE IS INDIVIDUALLY OWNED AND OPERATED.

*Guiding you home.*

DISCLAIMER: While the data has been formulated with all due care, Coldwell Banker Neumann R.E.B does not warrant or represent that the data is free from errors or omission or that it is exhaustive. The data represents information presented by The Canadian Real Estate Association, in co-operation with the Guelph & District Association of REALTORS®. Stats are gathered through the Guelph & District Association of Realtors based on all residential real estate in the Puslinch area only from January 1, 2021 - March 31, 2021



**CAPSTONE**  
Real Estate Professionals

ROYAL CITY REALTY  
BROKERAGE

ROYAL LEPAGE  
BROKERAGE



Ranked Top 1% of all Royal  
LePage Realtors in  
Canada

List your home with the ones that know rural properties!



\*Based on rural and farm properties sold in Centre Wellington, Guilford-Eramosa, and Puslinch as reported through Guelph & District Association of Realtors (GDAR) from January 1, 2010 - December 31, 2019.

519.820.9567

www.CapstoneReps.com

CapstoneTeam@RoyalLePage.ca



CapstoneReps



CapstoneReps

60+  
Years of  
Experience

100%  
Care for our  
Clients

578+  
Homes Sold

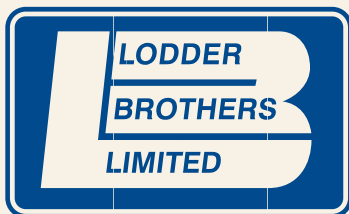
392M+  
Sold in Real  
Estate

YOUR

# SEPTIC SYSTEM

IS CRITICAL TO YOUR HAPPY HOME

**CALL 519-836-6370**



**AVOID MESSY AND EXPENSIVE  
PUBLIC HEALTH AND ENVIRONMENTAL HAZARDS AND  
SYSTEM FAILURE!**

LODDERBROTHERS.COM

LODDER BROTHERS IS YOUR **TRUSTED SEPTIC EXPERT**

**PRESENT  
THIS AD  
FOR YOUR  
FREE ON-SITE  
CONSULTATION**



## Rain barrels fundraiser



With spring and gardens in mind, the Rotary Club of Guelph Trillium is launching a fundraiser selling rain barrels. Proceeds from the sales will support local charities in Guelph and surrounding areas.

It's no secret that rain barrels are gaining popularity among homeowners. Learn about ways to use your rain barrel and what the benefits are.

### Ways to use your rain barrel:

1. Water your garden, grass and indoor plants.

2. Clean outdoor furniture and tools.
3. Moisten your compost bin when it's drying up.

### Why you should use a rain barrel:

**Save Money and Water:** Using rain water instead of tap water for outdoor use, reduces your water bill.

**Better Gardens:** Improve the growth and vitality of your plants by feeding them rain water instead of tap water that has many chemicals including chlorine and fluoride.

**Reduce Risk of Basement Flooding:** Disconnecting downspouts from your sewer drain and connecting them to your rain barrel reduces the risk of basement flooding.

If your rain barrel begins to get full there is an overflow hose that carries water away from your house.

Starting April 12, you can order your barrel, with delivery on May 20. Deadline for orders is May 13.

Each barrel is \$55 and can be picked up at

Original Home Furniture, 259 B Woodlawn Road West, Guelph.

Order from <https://rainbarrel.ca/trilliumrotary>



*Create a setting with that special atmosphere of being outdoors, but with all the indoor style and comfort you love.*



# Slotegraaf

Custom Homes • Additions • Renovations

1741 Bishop St. N Cambridge, Ontario  
519-620-2299

[www.slotegraafconstruction.com](http://www.slotegraafconstruction.com)  
f @slotegraafconstruction

**guildcraft**  
DUVETS, PILLOWS, BLINDS & DRAPERY

**Custom Sewing**

**Drapery**

**Blinds**

**Bedding**

**Duvets**

**Pillows**

**Upholstery**

**Travel Pillows**

**519-763-7651**

**In-Home Consultations**

**32 Wilson Street**

**Guelph, Ontario**

[www.duvet-pillow.com](http://www.duvet-pillow.com)

[cguild@duvet-pillow.com](mailto:cguild@duvet-pillow.com)



**agentis**  
electric Ltd.

**CUSTOM ELECTRICAL  
THAT FITS YOUR HOME**

Contact Agentis Today  
**226-203-0633**

ECRA/ESA 7008597



**Bio-Bob's**  
SEPTIC, EXCAVATING & PUMPING  
*Services*

- Septic Tank Pumpings & Inspections
- Septic System Repairs & Restoration
- Catch Basin Cleaning
- Mini Excavating & Trenching

TEL: (519) 648-3004 OR 1-800-232-6396

**Matthew Drysdale**  
Owner

Web: [www.biobobs.com](http://www.biobobs.com)

R.R. 2 - 1755 LONSDALE ROAD  
BRESLAU, ONTARIO N0B 1M0

Email: [biobobs@hotmail.com](mailto:biobobs@hotmail.com)

**House Cleaning Is A Wish Away**



*Work all day and just don't have the energy  
and the time to deal with the House Work?  
Let us come and be your little Genies...*

*Susan (519) 265-3272*



**Capital Paving Inc.**

P.O. Box 815, Guelph, ON, N1H 6L8

**Courier Address:**

4459 Concession 7, Puslinch, ON, N0B 2J0

**Tel:** (519) 822-4511

**Fax:** (519) 822-1454

[www.capitalpaving.net](http://www.capitalpaving.net)  
@CapitalPaving

Quality Construction by Quality People



**Live your dream.**

**Paul Embro**

Senior Associate  
[pembro@ipcc.org](mailto:pembro@ipcc.org)

**Stacie Giovino**

Associate  
[sgiovino@ipcc.org](mailto:sgiovino@ipcc.org)  
519.763.2197

Wealth Creation  
Wealth Preservation  
Wealth Legacy



**Investment  
Planning Counsel®**  
IPC INVESTMENT CORPORATION

12 DEER VIEW RIDGE, R.R.#3, GUELPH



**Complete Plumbing  
Services**

Kitchens • Bathrooms • Softeners

*Ken Cobb*

519-831-0422

email: [ken-cobb@outlook.com](mailto:ken-cobb@outlook.com)

Licensed and Insured

**Property Maintenance**

Backhoe - Loader Services  
Ideal for small areas  
Custom Digging - Trenching - Augering  
Landscaping - Retaining Walls - Fencing

Mike (519) 831-1808

**Pest Control**



**905-877-7014**

**Residential Specialists Since 1981**

Cluster flies, ants, wasps & bees,  
rats & mice, spiders, outdoor events,  
seasonal pests & programs.

**Dr. Bug**

[www.drbug.ca](http://www.drbug.ca)



**FERRA FLOORING LTD.**

AARON FERRACIOLI, Sales Manager

322 York Road, Guelph, Ontario N1E 3G5

(519) 821-1850 Fax (519) 821-3496

Email: [ferrafloor@golden.net](mailto:ferrafloor@golden.net)

[www.carpetone.ca/ferraflooring](http://www.carpetone.ca/ferraflooring)

**Automated Door Systems Ltd.**

GARAGE DOORS • OPENERS • SALES • SERVICE • PARTS

**GARAGA  
EXPERTS**

*Quality Work... Time after Time*

7A-650 Woodlawn Rd. W.  
Guelph, ON N1K 1B8

Tel: (519) 829-3777

Fax: (519) 829-1698

[www.automateddoor.net](http://www.automateddoor.net)

**Charlie Viana**

[ADS1@bellnet.ca](mailto:ADS1@bellnet.ca)



# Puslinch Branch, Wellington County Library

For current hours and services, please call Puslinch Branch at 519.763.8026 or visit us online at [www.wellington.ca/Library](http://www.wellington.ca/Library).

## Virtual Author Visits with Eden Mills Writers' Festival

Join us in celebrating Canadian Children's Book Week, presented in partnership with Wellington County Library and Eden Mills Writers' Festival. Visit Eden Mills Writers' Festival: In Your Own Backyard at [www.emwf.ca](http://www.emwf.ca) to register for these free events for school groups, online learners, and families.

**Tuesday, May 4 at 10:00 am**, bring picture book creator Jon Klassen into your classroom or living room for a virtual reading of his latest book, *A Rock from the Sky*.

**Tuesday, May 11 at 1:30 pm**, explore the thrilling conclusion of Kenneth Oppel's *The Overthrow* trilogy. Join Oppel alongside WCL staff for a discussion of *Thrive* just as it's hitting shelves!

**Tuesday, June 15 at 10:00 am**, join child-parent duo Basil and Kevin Sylvester to talk about *The Fabulous Zed Watson* in celebration of Pride Month.

**Story Time at Home (All Ages)**  
Join us virtually for live songs, stories, rhymes, and activities aimed at developing your child's early literacy skills. Pre-registration is required to receive a kit and virtual meeting link. If you would like the kit sent to another branch, please ask Puslinch Branch staff.  
Wednesdays, May 5, 12, 19 and 26 at 11:00 am

**Just for You from WCL**  
Wondering what to read, watch, or listen to next? Wellington County Library

staff are here to help! Visit [www.wellington.ca/justforyou](http://www.wellington.ca/justforyou), tell us what you love, and we'll hand-pick a selection of titles for you to borrow. While you're waiting for your Just for You bundle, check out this list of new books at the library.

### Fiction

Alexander, Tasha

*The Dark Heart of Florence*

Clare, Alys  
Cooper, Helen

*The Outcast Girls*  
*The Downstairs Neighbor*

Elliott, Lauren

*Under The Cover of Murder*

Hauty, Chris  
Lansing, Kate  
Quinn, Meghan

*Deep State*  
*Killer Chardonay*  
*The Wedding Game*

Stabenow, Dana  
Tsumura, Kikuko

*Spoils of The Dead*  
*There's No Such Thing as an Easy Job*

Wingate, Marty

*Glamour Girls*

### Non-Fiction

Baker, Billy

*We Need to Hang Out: A Memoir of Making Friends*

Bonnie, Henry

*Be Kind, Be Calm, Be Safe: Four Weeks That Shaped a Pandemic*

Callan, Kevin

*Once Around Algonquin: An Epic Canoe Journey*

Good Housekeeping

*Easy Meal Prep: The Ultimate Playbook for Make-Ahead Meals*

Gundry, Steven R.

*The Energy Paradox: What to Do When Your Get-Up-And-Go Has Got Up and Gone*

Hickel, Jason

*Less Is More: How Degrowth Will Save the World*

Icard, Michelle

*Fourteen Talks by Age Fourteen: The Essential Conversations You Need to Have with Your Kids Before They Start High School*

Jones, Andrea

*The Garden Source: Inspirational Design Ideas for Gardens and Landscapes*

Larman, Alexander

*The Crown in Crisis: Countdown to The Abdication*

Mcneer, Claire

*Answers in The Form of Questions*

**“The purpose of God in creating man hath been...to enable him to know his Creator and to attain His Presence.”**  
‘Abdu’l-Bahá  
[bahai.ca](http://bahai.ca)

**JOHN FROST** Master Electrician  
Electrical Contractor/Owner ESA/ECRA Licence #7014426  
**519-829-5105**  
[frostelectric.ca](http://frostelectric.ca) [john@frostelectric.ca](mailto:john@frostelectric.ca)

**NOW OPEN!**  
Full Service Veterinary Clinic  
*Caring for your pets!*  
General small animal wellness prevention and surgery

**MORRISTON VETERINARY CLINIC**  
Abraham D. Aho, DVM

29 Queen Street, Morriston, ON N0B 2C0  
**519.766.9494**  
[contact@morristonvetclinic.com](mailto:contact@morristonvetclinic.com)  
[www.morristonvetclinic.com](http://www.morristonvetclinic.com)

**Nick FitzGibbon**  
Let's talk real estate

**Nick Fitzgibbon**  
Sales Representative  
nick@cbn.on.ca  
519.821.3600  
nickfitzgibbon.com

**LOCAL+ TRUSTED**



**COLDWELL BANKER**  
NEUMANN REAL ESTATE,  
BROKERAGE



**Haydens**  
PROPERTY MAINTENANCE  
519-823-2188

*Specializing in:* **MAINTENANCE OF COUNTRY PROPERTIES**

- Professional Lawn Care sodding, seeding, fertilizer
- Garden Maintenance trimming, weeding, edging
- Topsoil & Mulch sales delivery & installation
- Trucking & Backhoe services



*Plus:* Winter-Snow Removal, Sanding & Salting



**CORE ELECTRIC**

Residential  Commercial  Industrial

**519.827.7997**

[www.CoreElectricGuelph.com](http://www.CoreElectricGuelph.com)  
[info@CoreElectricGuelph.com](mailto:info@CoreElectricGuelph.com)  
ECRA/ESA #7009619

# NATURALLY SPEAKING

## Haskaps

By Marion Robertson

At Bee Sweet Nature Co we are first and foremost a native plant nursery. But that doesn't mean that we can't have a bit of wiggle room and grow our plant stock base.

We have now added sustainable food plants to our inventory. Why? We never thought about food security until COVID 19 came along.

Our food supply was based on global trading and most of us had drifted away from our agricultural roots. Maybe we need to reevaluate our lifestyles and start growing food, again.

Haskaps are not a new addition to Canada. *Lonicera caerulea* was first cultivated in Canada in the 1950's. But to be quite honest, they were not that great.

What I am focusing on are the new cultivars created by the University of Saskatchewan from these original Haskaps. These cultivars are truly amazing with cold hardiness to -45C and flowers have been known to survive and set fruit after -11C temperatures.

To back track, what are Haskaps? They are an edible blue honeysuckle



or honeyberry. The name is derived from Japanese meaning, "berry of long life and good vision".

An unusual taste, tart and sweet at the same time. Like blueberry and raspberry combined. These fruit are super loaded in antioxidants, one of the highest of all fruits.

And wildlife loves the berries, too. So beware – pay attention when Haskap are fruiting since birds will strip a bush incredibly quickly.

They are a compact bush attaining heights of four-five feet and widths of four feet. Be sure to plant them three feet apart.

By May, Haskaps will bloom and have fruit available by late June. In fact, it is one of the first fruit crops beating strawberries by a few weeks. But the bonus is that these bushes will continue to bear fruit into the Fall.

When harvesting remember that the fruit will turn purple close to maturation. However, wait till they physically drop off the bush for maximum flavour.

Their biological traits are interesting and you need to pay attention to this. You just can't plant any bushes and expect fruit. Won't happen.

There are no male or female bushes but all Haskaps are self incompatible. That means they can't be pollinated with their own pollen. They need a 'pollinizer' which means they need a different variety of Haskaps to pollinate each other. The University of Saskatchewan has a great listing of pollinizers and compatibilities.

Bees and insects must carry the pollen from one flowering Haskap to the next in order for pollination and fruit set to occur. Make the area attractive to pollinators.

Since flowering occurs in May we find that leaving dandelions in the area attract the insects and then they are drawn to the Haskaps. Remember not to spray since you are drawing pollinators to your bushes for pollination services.

From what I have researched, Haskaps are not prone to pests and diseases. Upkeep is minimal pruning and no fertilizer is necessary. Almost sounds too good to be true!

To view more sustainable food articles visit the knowledge base of our website at <https://beesweetnature.ca/knowledge-base/?v=3e8d115eb4b3>

*Marion Robertson is co owner of Bee Sweet Nature Co specializing in native and Carolinian plant stock and natural Ontario honey and honey products.*

**Michael Chong**  
Member of Parliament,  
Wellington - Halton Hills

michael.chong@parl.gc.ca      866- 878 5556      www.michaelchong.ca

# HERITAGE MATTERS

## The Monument Makers

By Mary Tivy

The earliest gravestones in our Puslinch cemeteries were made out of local sandstone or limestone. By the 1850s fashion in grave markers had shifted to white marble.

Marble is a soft luminous stone that is easily carved and embellished. Artisans called "marble workers" made gravestones in workshops known as "marble works".

Every town in our area had at least one or more marble works; by the 1870s Hamilton had six, Guelph had three, and Galt had two.



Local marble workshops purchased large blocks of marble cut from quarries in Vermont or Eastern Ontario. Italian or British marble might be acquired through a dealer.

Marble works provided pattern books

for customers to browse through to choose images, lettering styles and epitaphs. Sample stones were set up for viewing at the storefront of the workshop.

An 1874 order book from the Wideman marble works in Stouffville Ontario records the purchase of a stone by James Bowman for his departed wife.

"\$20.00 In Memory of E\_M\_D\_. Wife of James Bowman Who Died May 11th 1874 AE 33 yrs. Design 1 [from] Morton's Book. With Clasped Hands Instead of Star. "Going Home ` over the Clasped Hands, the thumb to be on the third finger. Set up in the spring of 1875. Verse written on [attached] paper."

This pattern was then transferred onto a stone and carved into it with mallets, chisels, picks, rasps and drills, and polished when completed. "Set up" in the order referred to placement on the cemetery plot. Mr. Bowman paid \$20.00 for his wife's stone, about two weeks wages.

The widespread use of pattern books explains why similar motifs, such as clasped hands, floral wreaths, and weeping willows, as well as identical epitaphs, appear on stones made by separate marble works throughout our Township, and even throughout the Province.

Some marble workers signed their stones in the lower left or right corner. Of the hundreds of gravestones in Puslinch, pioneer cemeteries only 72 have carver's signatures still visible

on them. These autographed stones came from 16 different marble works located in Georgetown, Hamilton, Waterloo, Guelph and Galt.

By the late 1880s, gravestone styles had begun to shift away from the single marble slab headstone toward pillars and obelisks marking whole family internments.

Despite its expense, coloured granite became the stone of choice for grave markers by the 1890s. Granite was also exported from quarries in Vermont, and these quarries became wholesalers of partially or fully cut headstones, which were personalized by the local dealer.

With the growing use of granite for gravestones 'marble works' became 'monument works.' In 1902 Sear's Roebuck produced an illustrated "Catalogue of Memorial Art in Granite and Marble" for purchase by the consumer.

The 149-page mail order catalogue offered an array of designs, verses and lettering with competitive prices.

Sandstone, limestone and white marble gravestones still stand distinct in our cemetery landscapes, monuments to loved ones and families who cleared the land and founded our community over a century and a half ago.

These skillfully carved stones are both works of art and historical artifacts, but they are in serious jeopardy. I'll explain why in next month's column.

# PROTECT ALL THAT MATTERS TO YOU

*I'm happy to serve many clients in Puslinch! Request a quote today.*

**SCOTT PARKER, AGENT**  
Tel: 519.841.1099  
scott@dumfriesmutual.com  
dumfriesmutual.com/scottparker

**Dumfries**  
MUTUAL INSURANCE COMPANY  
PROUDLY LOCAL SINCE 1856

# Cook's Corner

By Barbara Paterson

*When served together, these two recipes make a simple but satisfying lunch. The mushroom recipe comes from my mother-in-law. The salad is unusual, with an interesting combination of ingredients.*



## Mushrooms in Sour Cream

- 1 lb. mushrooms
- 3 tbsp. butter
- 2 tbsp. water
- 1 cup commercial sour cream
- 1 tsp. salt
- ¼ tsp. pepper
- Pinch of tarragon

- Pinch of nutmeg
- 4 slices buttered toast
- Crispy bacon (optional)

1. Fry bacon if using.
2. Cut large mushrooms in halves or quarters; keep the small ones whole.
3. Heat butter in heavy frying pan, add mushrooms and cook over moderate heat, stirring constantly for 2 minutes.
4. Add water and simmer 2 more minutes. Remove from heat.
5. Stir in sour cream and seasonings.
6. Heat on low until just heated through (do not boil).
7. Serve immediately on hot buttered toast, with bacon on the side.



## Celery Salad with Dates

- 4 celery stalks
  - ¼ cup sliced almonds, lightly toasted
  - 8 dates, cut in pieces
  - Parmesan cheese
1. Cut celery into half inch pieces.

2. Add almonds and dates.
3. Sprinkle with grated Parmesan cheese.
4. Serve with a simple oil and lemon juice dressing such as the one below.

### Basic Vinaigrette

- 1 tsp. mild mustard
- 2 tbsp. lemon juice
- 1 tbsp. vinegar
- 5 tbsp. extra virgin olive oil
- Salt & pepper to taste

1. Mix the mustard with the lemon juice and vinegar.
2. Gradually add the olive oil, then season with salt & pepper.

**THE**  
**COUNTERTOP**  
**DEPOT**

**Laminate \* Corian \* Solid Wood**  
**\* Quartz \* Granite**

1007 York Road, Guelph, ON. Tele: 519-823-8291  
[www.countertop-depot.com](http://www.countertop-depot.com)

**CUSTOM BUILDS • RENOVATIONS**



James Anthony 519.546.4642  
[info@anthonyhomes.ca](mailto:info@anthonyhomes.ca)  
**ANTHONYHOMES.CA**



**OOSTERVELD**  
**HEATING & AC**

*Friendly-Neighbourhood Experts*

**519-837-2351**  
[oosterveldheating.com](http://oosterveldheating.com)

**HEALTH AND HAPPINESS!**

**We're open and safe for all of your home comfort needs as we navigate COVID-19 this year.**



★★★★★

Follow us to see our latest rebate offers and specials.

[f](#) [@](#)

★★★★★

Serving your community for over 40 years



**Van Harten**  
SURVEYING INC.

LAND SURVEYORS and ENGINEERS

**SPECIALISTS IN SEVERANCE APPLICATIONS**

**ENGINEERS OF SEPTIC SYSTEMS**

SURVEYOR'S REAL PROPERTY REPORTS

TOPOGRAPHIC SURVEYS

DRAINAGE SURVEYS

GPS SURVEYS

BOUNDARY SURVEYS FOR FENCING

PHONE: (519) 821-2763 FAX: (519) 821-2770

EMAIL: info@vanharten.com

423 Woolwich St., Guelph Ontario N1H 3X3

660 Riddell Rd., Orangeville Ontario L9W 5G5

572 Weber St. N., Unit 7, Waterloo Ontario N2L 5C6

www.vanharten.com



**FREELTON EYE CARE**

835 Regional Road 97  
Freelton, ON L8B 0Z4

Mon & Tues	8:30AM – 4:30PM
Wed & Thurs	11AM – 7:30PM
Fri	9AM – 1PM
*Saturdays, based upon demand	

Examinations & Laser Consults

Specialty Contact Lenses & Eyewear

Injury Treatment & Prevention

P: 905-659-3937 (EYES) F: 905-659-3834 doctoreyes.ca

**full service automotive repair**


**Vince Klimkosz - Owner - Tel: 519.821.8880**  
email: vinniesmrfixit@hotmail.com

30 Hayes Avenue • Guelph • Ontario • N1E 5V5

41 Woodlawn Rd. W. • Guelph • Ontario • N1H 1G8  
email: vinniesmrfixitnorth@hotmail.com  
**Tel: 519.821.1888**

Weekdays 8:00 am - 5:30 pm • Saturdays 8:00 am - 1:00 pm  
Repairs to Most Makes and Models

**fast • reliable • friendly service**



As always, we're here to help on matters involving the Provincial Government.

**TED ARNOTT, MPP**  
Wellington-Halton Hills

www.tedarnottmpp.com | 1.800.265.2366



**“DOING IT RIGHT THE FIRST TIME”**

**JOSH MAST** 519.827.4042  
OWNER/OPERATOR mastworks@hotmail.com

LEVELLING ▪ GRADING ▪ SITE CLEANUP  
DUMP TRUCK ▪ MATERIAL DELIVERY  
FARM CLEANUP ▪ TREE REMOVAL  
BULLDOZER ▪ EXCAVATOR ▪ SKIDSTEER SERVICES



# Ask the expert

By Heather Rajotte

*Q: I heard about an invasive species called gypsy moth in our area. What kind of damage does it do, and how can I help to control it in my neighbourhood?*

Gypsy moth (*Lymantria dispar*), has been declared an invasive species by the Government of Canada, and is widespread throughout the eastern portion of our country.

They are one of the primary defoliating pests, and have over 500 potential host plants. This can make gypsy moth epidemics very difficult to predict and control.

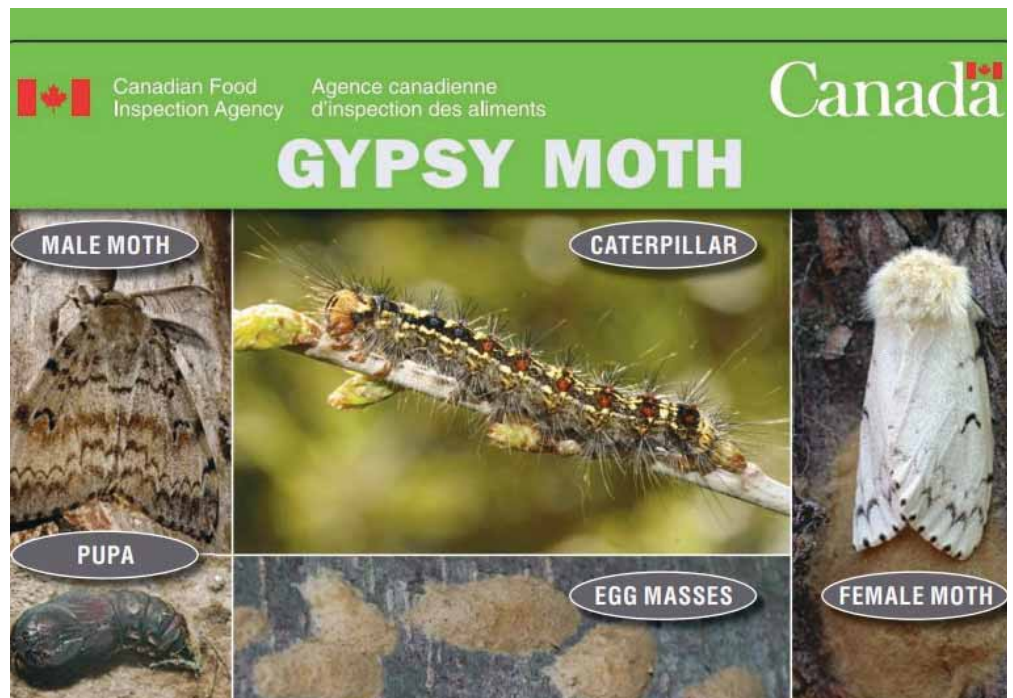
What makes gypsy moth so devastating is that they have multiple larval stages (called instars), all of which can do damage to host plants.

When the eggs hatch in May, residents of affected areas will quickly notice masses of small black/brown fuzzy caterpillars all over building roofs and decks.

As the caterpillars develop through their instars, they become larger as they continue to feed, with the final stage showing characteristic red and blue dots on their spines.

The caterpillars then pupate into adult moths – immobile white females, and brown males which are very active at ground level during daytime hours (typically July-August).

The females lay egg masses on tree trunks, lawn equipment and motor vehicles. These egg masses are very recognizable due to their orange/tan colour, erratic shape, and highly textured appearance.



Canadian Food Inspection Agency: [https://inspection.canada.ca/DAM/DAM-plants-vegetaux/STAGING/text-texte/gypsy\\_moth\\_1548355409137\\_eng.pdf](https://inspection.canada.ca/DAM/DAM-plants-vegetaux/STAGING/text-texte/gypsy_moth_1548355409137_eng.pdf)

Although gypsy moth has many hosts, their favourites are oak trees (*Quercus spp.*). If you have oak trees in your neighbourhood, it's a safe bet that gypsy moth will be around.

They are also known to feed on some maples, birch, crabapple, poplar and willow, to name a few. With that many food sources, it's almost impossible to know if and/or when gypsy moth will come to your area.

The easiest way to start controlling gypsy moth in your area is to look for egg masses. You can do this two times a year: when they are freshly laid in July/August, or in the spring after they have overwintered.

Check tree trunks, lawn tractors, ATVs and garden shed walls. If you find an egg mass, scrape it cleanly off and deposit it in a bucket of hot water and bleach.

Ensure that you clean any scraping tools with the same solution between scrapes!

If you have a known tree in your yard that is plagued with gypsy moth every year, you can wrap the base of the trunk with a sticky trap just after caterpillars start to appear.

Caterpillars walk up and down the tree trunks every day to feed, and these traps are a great way to catch and dispose of them.

If you are considering planting a new tree, it may be a good idea to stay away from oaks for the near future.

Do some research on gypsy moth resistant varieties and choose from one of those instead.

Lastly, get your neighbours involved! The more people that are aware and actively working to reduce gypsy moth populations, the better overall control we will have over this invasive pest. Spread the word!

**Master Gardener's Plant Sale:** Online ordering starts May 20. View our website for details: [www.gwmastergardeners.ca](http://www.gwmastergardeners.ca)

# Religious Services

*In these ever-changing times, it is wise to double-check the website to determine if in-person services are happening or the event is taking place.*

## ARKELL UNITED CHURCH

"The Little Church with the BIG Heart"  
600 Arkell Road at Watson, Arkell, ON N0B 1C0  
(519) 821-7623  
[www.arkellunitedchurch.ca](http://www.arkellunitedchurch.ca)

Rev. Deborah Deavu

Until further notice, there are no Sunday worship services at the Church. See the church's website for updates. To receive weekly services via email, send a message to [arkellunitedchurch@hotmail.com](mailto:arkellunitedchurch@hotmail.com).

## BAHA'I FAITH

[www.bahaisofpuslinch.ca](http://www.bahaisofpuslinch.ca).

- You are invited to join us in our study of – *Reflections on the Life of the Spirit* – a course on the spiritual nature of the human being. During the pandemic, this study will be conducted via the Zoom video conference platform. Call 519-767-3135 or email [lsapuslinch@gmail.com](mailto:lsapuslinch@gmail.com) for particulars of date, time and Zoom link.

## CALVARY BAPTIST CHURCH

454 Arkell Road, Arkell, ON N0B 1C0  
(519) 824-1161

[www.calvaryguelph.com](http://www.calvaryguelph.com)

Pastors: Josh Sklar and Joe Yang

- Sunday worship: English 9:45 am  
Chinese 11:30 am
- Children's Worship: Sunday morning program held during main services.
- Calvary Youth: For Jr. & Sr. High programs - please go to church website for more information.
- Adult Bible Study: Thursdays 10:00 am.

## CROSS ROADS BIC CHURCH

Living and Loving Like Jesus.  
Peacefully. Compassionately. Together.  
4614 Wellington Rd. 32, Guelph ON N1H 6J3  
Ph. 519-658-9746

Web Site: [www.crossroadsbic.ca](http://www.crossroadsbic.ca)

Facebook: Cross Roads BIC & Cross

Roads Youth Group

Pastor: Melissa Richer

Sunday Worship @ Home: YouTube "Cross Roads BIC"

[www.youtube.com/channel/UCMKYAskvq1HdGsTiA7UQFsg](http://www.youtube.com/channel/UCMKYAskvq1HdGsTiA7UQFsg).

## DUFF'S PRESBYTERIAN CHURCH

We look forward to welcoming you again!  
319 Brock Rd. S. & 401, Puslinch, ON N0B 2J0  
(519) 763-1163  
[office@duffschurch.ca](mailto:office@duffschurch.ca)  
[www.duffschurch.ca](http://www.duffschurch.ca)  
[www.facebook.com/duffschurch/](https://www.facebook.com/duffschurch/)  
May 2021

## EBENEZER UNITED CHURCH

12274 Guelph Line, (just North of 20 Sideroad) North of Campbellville, Milton, ON L0P 1B0  
(905) 854-2423  
Webpage: [www.ebenezeruc.ca](http://www.ebenezeruc.ca) - Like us on Facebook  
Minister: Carolin MacMillan  
Music Director: John Zadro  
Worship Services: Every Sunday 10am

## FREELTON UNITED CHURCH

155 Freelon Rd. at Douglas Street, Freelon, ON L8B 0Z5  
(905) 659-3380  
[www.freeltonstrabaneuc.ca](http://www.freeltonstrabaneuc.ca)  
Minister: Rev. Will Wheeler  
• Sunday Worship Services & Sunday School at 9:30 am.  
Coffee hour & fellowship to follow.

## KNOX PRESBYTERIAN CHURCH, CRIEFF

7156 Concession 1, Puslinch, ON N0B 2J0  
(519) 824-8757  
[www.pccweb.ca/knox-crieff/](http://www.pccweb.ca/knox-crieff/)  
Minister Rev. Michelle Yoon  
• Sunday Worship at 10 am.  
While the pandemic remains our weekly services are posted on Facebook look for Knox Presbyterian Church, Crieff.

## MOUNT CARMEL-ZION UNITED CHURCH

in Morriston at the corner of Church & Victoria Streets, Morriston, ON N0B 2C0  
Minister: Rev. Margaret Ruggles  
(519) 822-8610  
[www.morristonunitedchurch.com](http://www.morristonunitedchurch.com)  
Email: [morristonunitedchurch@gmail.com](mailto:morristonunitedchurch@gmail.com)  
We are continuing to remain closed but are holding online services every Sunday at 10:30 am on our Facebook page. "Mount Carmel-Zion United Church". Be sure to "follow us". Stay tuned for news on re-opening!

## OUR LADY OF MOUNT CARMEL ROMAN CATHOLIC CHURCH

79 Freelon Road, Freelon, ON L0R 1K0  
(905) 659-3305  
Father Edward Mahony  
Masses as follows:  
• Saturday: 5:00 pm  
• Sunday: 9:00 am and 11:00 am.

## THE SALVATION ARMY GUELPH CITADEL

"A Place of Christian Worship & Service"  
1320 Gordon St. Guelph, ON N1L 1H3  
(519) 836-9360  
[www.guelphsa.ca](http://www.guelphsa.ca)  
Majors Peter and Lee-Ann van Duinen  
• Worship Service: Sunday 11:00 am  
• Sunday School: 11:30 am (Age 2 to Grade 6)  
Please check the website for more information.

## SEVENTH DAY ADVENTIST REFORM MOVEMENT CHURCH

We welcome you!  
3997 HWY 6, Puslinch ON, N0B 2J0  
(905) 659-1229  
email: [dorin\\_sdarm@yahoo.com](mailto:dorin_sdarm@yahoo.com)  
[www.sdarm.ca](http://www.sdarm.ca)  
Elder: Paul Gavric  
Pastor: Dorin Burca

## ST. JAMES' ANGLICAN CHURCH

520 Ellis Rd. (beside Hespeler Arena, west of Townline Rd.)  
Hespeler - Cambridge, ON N3C 0E6  
Rector Rev. Canon Linda Nixon  
• Sunday Services  
8:30 am Holy Eucharist - Traditional  
10:00 am Holy Eucharist 1st, 2nd, 4th and 5th Sundays  
Morning Prayer 3rd Sunday  
Sunday School & Nursery at 10 am Service.

## STRABANE UNITED CHURCH

1565 Brock Road, (Brock Rd & 8th Concession West) Freelon, ON L0R 1K0

# Community Events

*At the Puslinch Pioneer, we like to promote community events and we ask for your co-operation in keeping them under the 50 word count so we can accommodate as many as possible. If your event is taking place outside of Puslinch, or is a for-profit venture, there is a \$25 charge for the listing.*

## Rotary Pasta Picnic Al Fresco: Friday, June 18th at the Puslinch Community Centre.

Reserve Tickets: Contact Celia at [celia@digitalfrog.com](mailto:celia@digitalfrog.com) or 519 766-1097. You will be able to pick up your meal outside the Puslinch Community Centre, then enjoy it sitting at a picnic table or on your own blanket.

Proceeds support Sunrise Therapeutic Riding & Learning Centre, and other community charitable organizations.

# Community Announcements

## BIG BROTHERS BIG SISTERS OF GUELPH

Learn to be a kid again! Volunteer mentors needed for local children. Big Brothers Big Sisters of Guelph has five programs with varying levels of time commitment. Call (519) 824-5154, email [info@bbbsg.ca](mailto:info@bbbsg.ca) or visit us online at [www.bbbsg.ca](http://www.bbbsg.ca).

## BOOKING AGENTS

### ARKELL UNITED CHURCH

Contact Melanie Hardie at (519) 823-3390 or email [melabj@rogers.com](mailto:melabj@rogers.com).

# Inside the Back Page . . .

**Norwex**  
improving quality of life

**Sue Gray**  
Independent Sales Consultant  
[www.susangray.norwex.biz](http://www.susangray.norwex.biz)  
519-829-4008

**ABERFOYLE TRUCK  
Lube & Alignment**  
7 Tawse Place, Guelph  
519 836-3700

**NOTARY PUBLIC**  
(Retired Lawyer)  
Affidavits sworn, Documents certified  
Housecalls  
Joe 519 823-2578

**HEAVY TRUCK &  
FARM TIRES  
SALES & SERVICE**

**Benson  
TIRE**  
Nicholas Beaver Road 519 763-7630

**PASSENGER & LIGHT  
TRUCK TIRES**

**Advertising Rates: Contact Dianne Churcher (519) 763-6564 or [advertising@puslinchpioneer.ca](mailto:advertising@puslinchpioneer.ca).**

**BADENOCH COMMUNITY CENTRE**  
Inquiries call 519-822-5232.

**DUFF'S CHURCH**  
Contact the church office at 519-763-1163 or email [office@duffschurch.ca](mailto:office@duffschurch.ca).

**FRELTON UNITED CHURCH**  
Contact Ray McConachie at 905-659-3033 or email [rayjo1819@hotmail.ca](mailto:rayjo1819@hotmail.ca).

**OPTIMIST RECREATION CENTRE AND  
PUSLINCH COMMUNITY CENTRE**  
Call (519) 763-1226 or email [rentals@puslinch.ca](mailto:rentals@puslinch.ca)

**CROWN CEMETERY PUSLINCH**  
Crown Cemetery Puslinch is located north of Morrison at Brock Road and Highway 401. It is a non-profit cemetery operated by a volunteer board of managers and a secretary/treasurer. We welcome all denominations for burials. For more information please visit our website at [www.crowncemetery.ca](http://www.crowncemetery.ca) or contact Darlene Harrietha at (519) 822-0874 or email [darleneharrietha@gmail.com](mailto:darleneharrietha@gmail.com).

**THE FRIENDS OF MILL CREEK**  
Meet at the Puslinch Community Centre at 3:30 pm. on the third Wednesday of every month (except August). If you share our passion for protecting this precious resource for future generations and in developing the next generation of conservationists, join us. For more information <http://www.friendsofmillcreek.org>

**THE MILL CREEK  
SUBWATERSHED  
COMMUNITY LIAISON TEAM**  
Holds its monthly meetings the second last Thursday of each month at 1:00 PM at the Community Centre in Aberfoyle. The public is invited.

**OPTIMIST CLUB OF PUSLINCH**  
Is one of the most active clubs in the Township. Our focus is youth. We meet on the 2nd and 4th Tuesday of each month.

Visit [www.optimistclubofpuslinch.com](http://www.optimistclubofpuslinch.com) and fill out an application or call Ken at 519-763-0309 or contact any club member.

**OPP.**  
If you have a concern about a police matter, please phone 1-888-310-1122 and request to meet an OPP officer at the Puslinch Township office.

**PUSLINCH FIDDLE GROUP**  
Meets the 3rd Sunday of each month at Duff's Church, Nanson Hall, from 1 - 4 pm. Come out and bring your fiddle, guitar, etc. and join in some good old fiddle music. Call Paul McDonald (519)763-9764.

**PARENT-CHILD PLACE**  
Is a free drop-in program for parents and caregivers with children birth to 6 years, running September -June. It runs on Tuesdays at the Puslinch Community Centre from 9:30-11:30.

**PUSLINCH LOAN CUPBOARD HOME  
HEALTH CARE EQUIPMENT SERVICE**  
is located in Duff's Presbyterian Church. For assistance call:

Gary Will	(519) 763-3958
Fred Law	(519) 767-2462
Dianne Hersey	(519) 824-6304
Carolyn Vandenheuvel	(226) 962-1173

**THE ROTARY CLUB OF GUELPH SOUTH**  
Meets every Thursday at 7:30 am. Check out [www.rotary7080.org/guelphsouth](http://www.rotary7080.org/guelphsouth) for more information. Contact Celia Clark for membership inquiries: (519-766-1097)

**METAL RECYCLING BIN – SUNRISE  
FARM (6920 Conc. 1, Puslinch)**  
Drop off 'unwanted' metals, e.g. stainless steel, aluminum, copper, tin cans, wire, metal rods, fencing etc. in the 'Gerda Ameristeel' recycling bin situated in our parking lot. We appreciate your support. For more info, contact Lynne O'Brien Sunrise (519) 837-0558 x31.



# The Back Page



**Kathy Kinzie R.M.T.**  
519 651-0401  
967 Townline Rd. Puslinch

**Mast Works**  
Your Dirt/Gravel Moving Guys  
519-827-4042

**HUBER**  
Window Cleaning  
Windows ~ Pressure Washing ~ Eavetroughs  
519-836-2000  
www.HuberWindowCleaning.com



**FERRARO**  
CONSTRUCTION GROUP .COM  
Repaint • Restore • Renovate • Rebuild  
Puslinch 519-822-2324

**Ball Exteriors Ltd.**  
Siding, Eaves Trough, Windows & Doors  
Soffit, Fascia, Sun Tunnels, Railings  
Free Estimates. Greg Bowles 519-841-0727



**brock road nursery**  
Garden Centre & Gift Shoppe  
www.brockroadnursery.com  
1858 Gordon Street, Guelph, ON, 519-836-5010  
25 YEARS



**Warwick McLaughlin**  
Financial Services  
**Manulife Securities**  
**Mary Warwick CFP, CIM, MBA**  
Financial Planner, Manulife Securities Incorporated  
1499 Gordon St, Guelph, ON, N1L 1C9  
Phone: 519-763-6279; Cell: 226-979-7683; Fax 519-763-7167  
Proud Residents of Puslinch  
with over 30 years industry experience



Electrical wiring and maintenance of new residential, additions and renovations commercial, and solar projects  
519-767-0768  
info@dallsonselectric.com

**A Change of Pace RESTAURANT**  
Hwy #6 -- South of 401, Morrision Plaza  
519 767-9987

**Space Available**  
Call (519) 763-6564



**T's Complete Move**  
C: 226-820-1032  
Downsize, Declutter, Move

**Dave's Home Improvements**  
Repair Work - Aluminum & Vinyl  
Installations 519-835-4018

**Space Available**  
Call (519) 763-6564



**Fresh Scents** Call today for a Free Custom Quote!  
We make good clean scents!  
Residential & Commercial Cleaning Service  
519-821-6000  
www.FreshScentsClean.com 1-888-821-6686

**Hayden's Property Maintenance Ltd.**  
Snow Plowing, Sanding & Salting  
PROFESSIONAL LAWN & GARDEN CARE  
Tel: 519-823-2188

**Space Available**  
Call (519) 763-6564

**ABERFOYLE FARMERS' MARKET**  
Foods you love ... Farmers you know!  
We are actively preparing for the 2021 season.  
Check our website & social media for updates.  
www.afma.ca

**ABERFOYLE TRUCK LUBE, REPAIR AND SALES**  
7 Tawse Place, Guelph  
519 836-3700

**ABERMOR MANUFACTURING**  
WELDING, FABRICATION AND REPAIR SERVICES  
CERTIFIED - MICHAEL VIOL (519) 837-0424  
www.abermormanufacturing.ca



**HAYDEN'S GARAGE INC.**  
519-763-1233



**PowerLine** the Best in Electronics  
409 Woodlawn Rd. W. Guelph  
519 836-1157 or 866-304-3339

**Space Available**  
Call (519) 763-6564

**Space Available**  
Call (519) 763-6564

**PROPERTY MAINTENANCE BACKHOE - LOADER SERVICES**  
Custom Digging - Trenching - Augering  
Landscaping - Small Retaining Walls  
Mike 519 831-1808

**WHERE IS JACK?**  
Vinyl Windows & Siding Specialists  
Since 1976 www.whereisjack.ca  
Jack's Aluminum Ltd 519 822-5000

**BELLAMUSICA**  
LIVE MUSIC FOR YOUR SPECIAL EVENT, MUSIC LESSONS.  
WWW.BELLAMUSICA.CA/YOUR-SPECIAL-EVENT-PLANNER  
HEAR US ON WWW.SOUNDCLOUD.COM/ROSESINJUNE.  
CONTACT: ROSEFOROURLADY24@GMAIL.COM

**VINNIE'S MR. FIXIT**  
Full Service Automotive Repairs  
30 Hayes Avenue  
Guelph, ON N1E 5V5  
519 821-8880 www.vinniesmrfixit.com

**SUNRISE:** Therapeutic Riding, Equine Assisted Learning & Life Skills Day programs.  
www.sunrise-therapeutic.ca  
Volunteers Needed -519 837-0558 x35



**Space Available**  
Call (519) 763-6564

**Michael's Mobile Truck & Trailer Repair Inc**  
Truck trailer and automotive repairs, annual safety inspections  
Aberfoyle 519 780-2710

**Space Available**  
Call (519) 763-6564

**DECKING AROUND**  
Licensed Carpentry since 1989  
Visit us at www.deckingaround.ca

Stock trailers or have us custom build a trailer for you  
For all your trailer needs.



**SPEEDWAY TRAILERS**  
CARGO TRAILERS  
CAR HAULERS  
DUMP TRAILERS  
UTILITY TRAILERS  
speedwaytrailers.com 519-835-1070  
6792 Wellington Rd. 34 • Puslinch, ON. N3C 2V4

**NORMIK MECHANICAL INC.**  
Heating & Cooling  
Trane™ Heating & Cooling Equipment  
Ronald A. Oosterveld 519 829-3163

**CatNap Cottages**  
Setting new standards in cat boarding  
Large private suites with windows  
www.catnappcottages.ca 519 766-0511

**Phipps Photo Management**  
Organizing & Managing your Photos and Memorabilia  
www.phippsphotomanagement.com  
Guelph, Puslinch & Area  
416-317-3713 maria.phipps@icloud.com

**Space Available**  
Call (519) 763-6564

**Frank's Small Engine Repair**  
Repairs to lawn mowers, snow blowers and gas powered lawn tractors  
871 Watson Rd. South, Arkell  
519 821-6895



**Chickadee Christmas Trees**  
6639 Wellington Rd 34  
519 654-2029  
www.chickadeechristmastrees.ca